

Science – Animals including humans

Investigation

Scientists design and carry out investigations.

Biology

Scientists have an understanding of life and living processes.

Chemistry

Scientists have an understanding of materials and their properties.

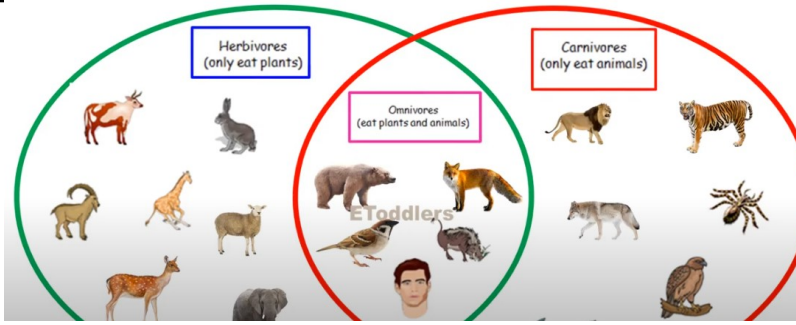
Physics

Scientists have an understanding of physical processes.

What should I already know?

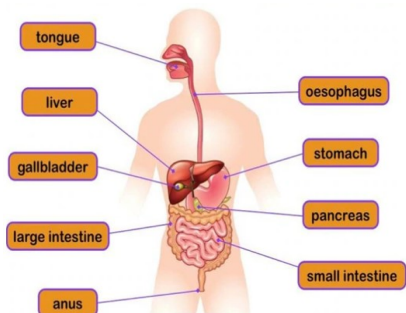
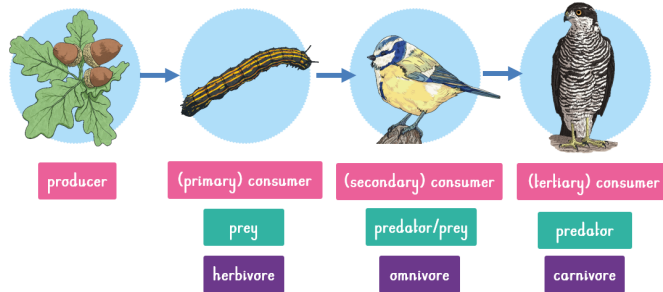


Animals and humans have skeletons for support.



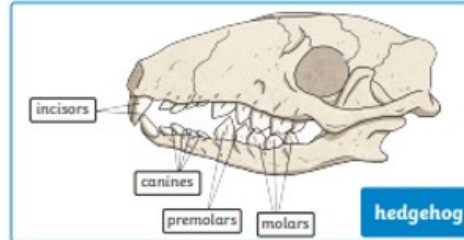
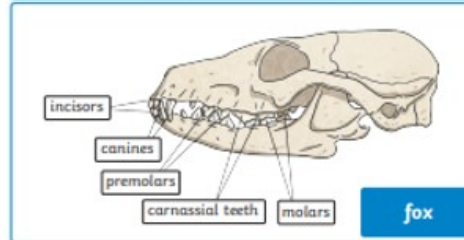
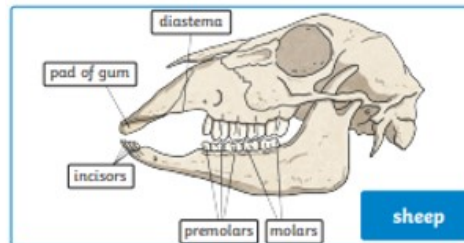
What am I going to learn?

Scientists use food chains to show what different animals eat in a habitat.



Food travels through the digestive system. Food is broken down by different organs.

Animal teeth



Key Vocabulary

Definition

oesophagus

The muscular tube through which food passes from the throat to the stomach

intestines

the lower part of the alimentary canal from the end of the stomach to the anus

enzymes

Enzymes are proteins that help speed up metabolism, or the chemical reactions in our bodies

decay

rot or decompose through the action of bacteria and fungi.

molar

A grinding tooth at the back of the mammal's mouth.

premolar

A tooth situated between the canine and the molar teeth.

incisor

A narrow-edged tooth at the front of the tooth.

canine

A pointed tooth between the incisors and premolars.

Key Scientist David Attenborough is a British broadcaster and biologist who has produced a range of programmes on animals and the planet.



Working Scientifically

Tights can be used to demonstrate how food moves through the Digestive system.

